



NETTELLER DEMO v2009 ENHANCEMENT LIST & IMPLEMENTATION GUIDE

EFFECTIVE DATE: MARCH 16, 2009

Purpose of This Document

This document is designed to detail the implementation of the 2009 version upgrade of the NetTeller Demo product for the NetTeller Demo User Group.

General Availability Date

The 2009 version of the NetTeller Demo product and related enhancements was implemented in production during regularly scheduled system maintenance on Sunday, March 15, 2009. The 2009 version is available to all financial institutions with signed NetTeller Demo contracts and who have been installed and trained by the Internet Solution's (IS) Education department. This product's version availability is independent of your scheduled NetTeller product's release date.

Version 2010 Enhancements

Version 2010 Enhancements will be submitted through JHA's ESP (Enhancement Submission Process) application. The enhancement submission/voting period will not begin until the NetTeller product suite's 2010 enhancements have been announced as many enhancements to the NetTeller Demo will largely be based upon accepted NetTeller product suite's 2010 enhancements.

NetTeller Demo v2009 - Enhancement List

1. "Multiple Demo" Administration Modifications – Aliases, Interface Design Update, Integrate Clone/Copy
The financial institution will now have the ability to provide a unique name/alias for the subdirectory of each Demo instance in place of the numbering scheme. As part of this enhancement, the interface was redesigned and the Clone/Copy administration was incorporated into the Multiple Demo Administration page.
Enhancement detail and screen shots are available on [pages 3 and 4](#).
Version Availability: This enhancement is available in all versions of the NetTeller Demo.
2. New Section: E-Statement Interactive (ESI)
An ESI section has been added and is comprised of three (3) new pages. The pages added are as follows.
Version Availability: This enhancement is available in versions 2008 and 2009 of the NetTeller Demo.
 - i. Intro Page
 - ii. Enrollment Screen
 - iii. Sample Statement
The E-Statement sample must be uploaded as a PDF file. For more information about the PDF file upload, see enhancement #7 – "Logo & File Upload" Administration Modifications.
3. New Section: GoDough Mobile Banking
A mobile banking section has been added and is comprised of 18 of new pages. The pages added are as follows. The mobile banking logo must be uploaded through the Demo Administration, see enhancement #7 – "Logo & File Upload" Administration.
Version Availability: This enhancement is available in versions 2008 and 2009 of the NetTeller Demo.
 - i. Intro Page
 - ii. Login (3 pages – with and without Watermark)
 - iii. Main Menu
 - iv. My Accounts – Account List
 - v. My Accounts – Account Transactions
 - vi. My Accounts – Transaction Details
 - vii. Transfer Funds – From
 - viii. Transfer Funds – To
 - ix. Transfer Funds – Amount
 - x. Transfer Funds – Confirmation
 - xi. Pay Bills – Select Payee
 - xii. Pay Bills – Select Account
 - xiii. Pay Bills – Amount
 - xiv. Pay Bills – Confirmation
 - xv. Alert – List
 - xvi. Alert – Details

4. Check Image (Fix)
The example check image has been converted to a black and white image reflecting what the customer/member views within the NetTeller product.
Version Availability: This enhancement is available in all versions of the NetTeller Demo.
5. Expedited Payments Page
A new page has been added under the NetTeller Bill Pay section of the Demo for the expedited payments feature.
Version Availability: This enhancement is available in versions 2008 and 2009 of the NetTeller Demo.
6. "Select Pages to Show" Administration Modification
This administration module has been updated for usability purposes.
Enhancement detail and screen shots are available on [pages 5 and 6](#).
Version Availability: This enhancement is available in all versions of the NetTeller Demo.
7. "Logo & File Upload" Administration Modification
This administration module has been updated to include the ability to upload a Mobile Banking logo image file and a sample PDF file of an E-Statement.
Enhancement detail and screen shots are available on [page 7 and 8](#).
Version Availability: This enhancement is available in all versions of the NetTeller Demo.

Steps to Implement Version 2009

Before you begin the implementation process, please read through the following steps. Be sure that you understand the steps thoroughly before you begin the set up process. If you are unclear how to complete the steps below please submit a support case through the For Clients portal or place a support call at 1-800-299-4222 and you will be assisted. Please note that you will need to be on your financial institution's CWR Authorized Submitter list for the NetTeller Demo product in order to receive assistance with an existing or new administration account for the NetTeller Demo administration site.

1. Open a browser window.
2. Type the Demo administration site URL in the address line. If you do not recall the administration site address and/or your username and login, please submit a support case through the For Clients portal or place a support call at 1-800-299-4222.
3. After logging in, begin the 2009 set up in your Demo's administration site. You may create a new Demo site by selecting the "Multiple Demo Administration" in the Demo Options drop-down menu or you may modify an existing Demo site using the "Select Versions and Modules" page. Make sure the correct instance of the Demo is selected in the "Change Demo" drop-down menu. On the "Select Versions and Modules" page, select version 2009 to show and then select the products/modules that you would like to show in your Demo site.
4. Proceed to the next page, "Pages to Show," and select the pages, including new and revised page(s), you would like to show in your Demo. You will be able to reorder the pages within each section on this administration page.
5. Proceed through the remainder of the Demo administration and make edits where applicable.

Important Reminders:

- When updating the text on a page, be sure you click the word "Update" to submit your changes before you navigate to the next page.
- You will have to select the headers you want to display in versions 2008 & 2009. Header selections will not carry over from your previous versions of the Demo.

NETTELLER DEMO v2009 ENHANCEMENT DETAIL

“Multiple Demo” Administration Modifications – Aliases, Interface Design Update, Integrate Clone/Copy

Benefit

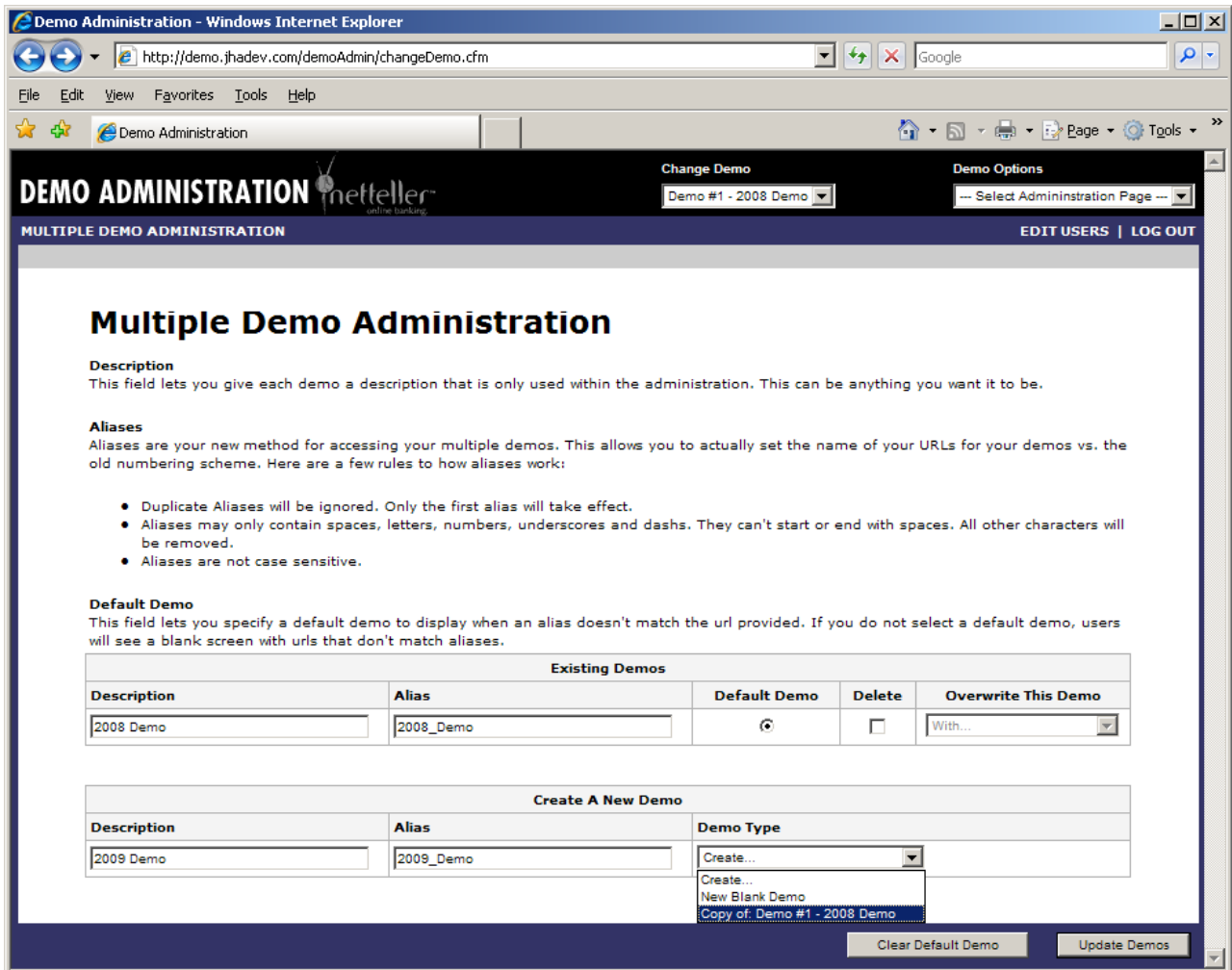
This enhancement allows you to provide a unique and meaningful name to each of your Demo instances instead of the current numbering scheme. The numbering scheme will continue to be supported as the default value for each instance unless you specify an alias for that instance. In the course of developing this enhancement, the interface of the page was redesigned and the Clone/Copy feature was incorporated into the Multiple Demo Administration Page.

Instructions for Implementation – Add/Update Alias

1. In the Demo Administration site, select the Demo instance that you wish to use as your source Demo site.
2. Select the “Multiple Demo Administration” from the Demo Options drop-down menu.
3. Type the Alias in the Alias field following the naming instructions at the top of the page.
4. Click the “Update Demos” button at the bottom of the page to submit the Alias.

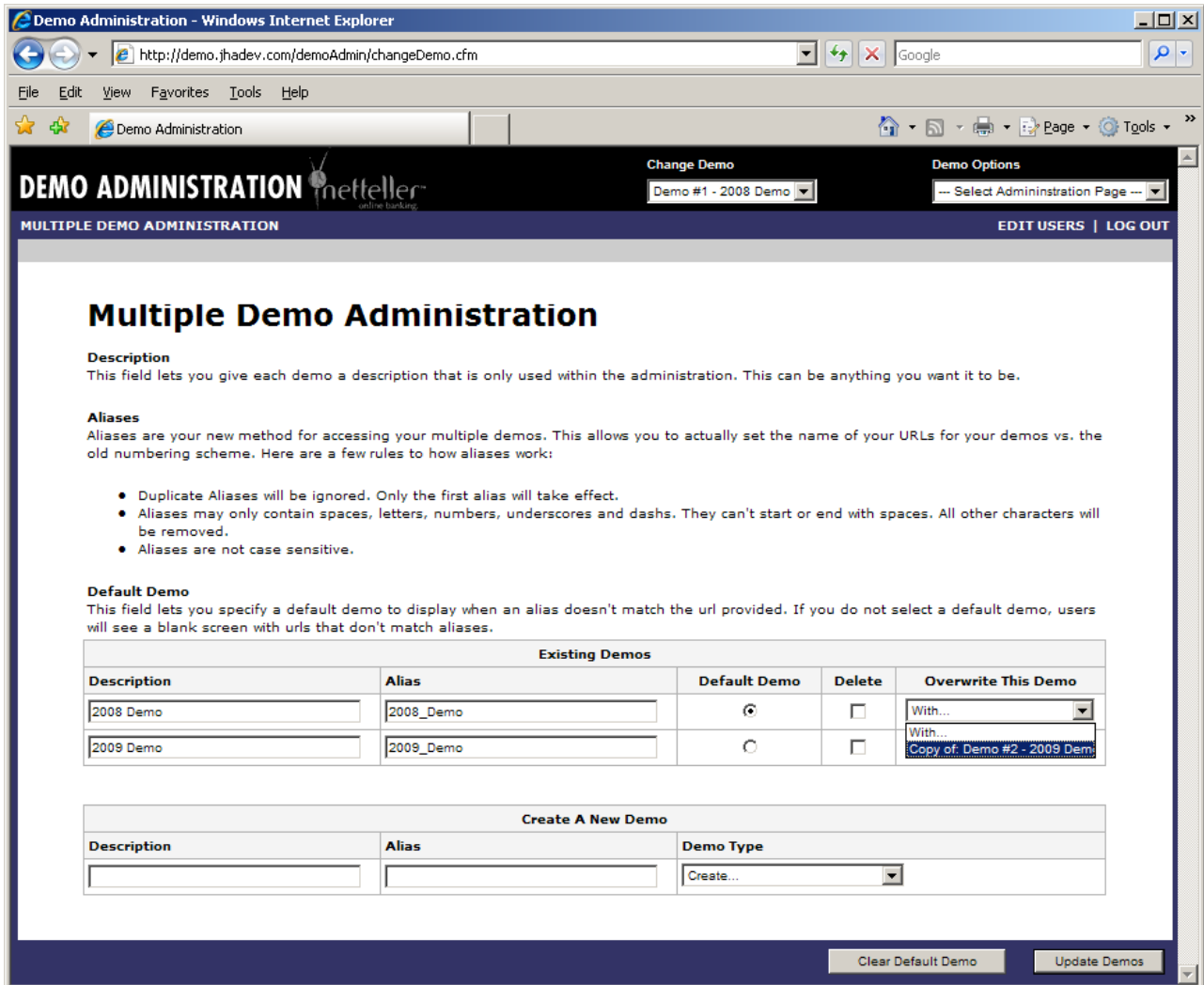
Instructions for Implementation – Create a New Demo

1. Type the Description and Alias for the new Demo instance.
2. Select “New Blank Demo” or select an existing Demo instance from the “Demo Type” field to serve as the foundation for your new Demo instance.
3. Click the “Update Demos” button at the bottom of the page to submit the new Demo instance.



Instructions for Implementation – Overwrite Demo

1. To overwrite an existing Demo, select the drop-down menu for the Demo to be overwritten under the “Overwrite This Demo” column.
2. Select the Demo instance to be used to overwrite that Demo.
3. Click the “Update Demos” button at the bottom of the page to submit the overwrite content.



NETTELLER DEMO v2009 ENHANCEMENT DETAIL

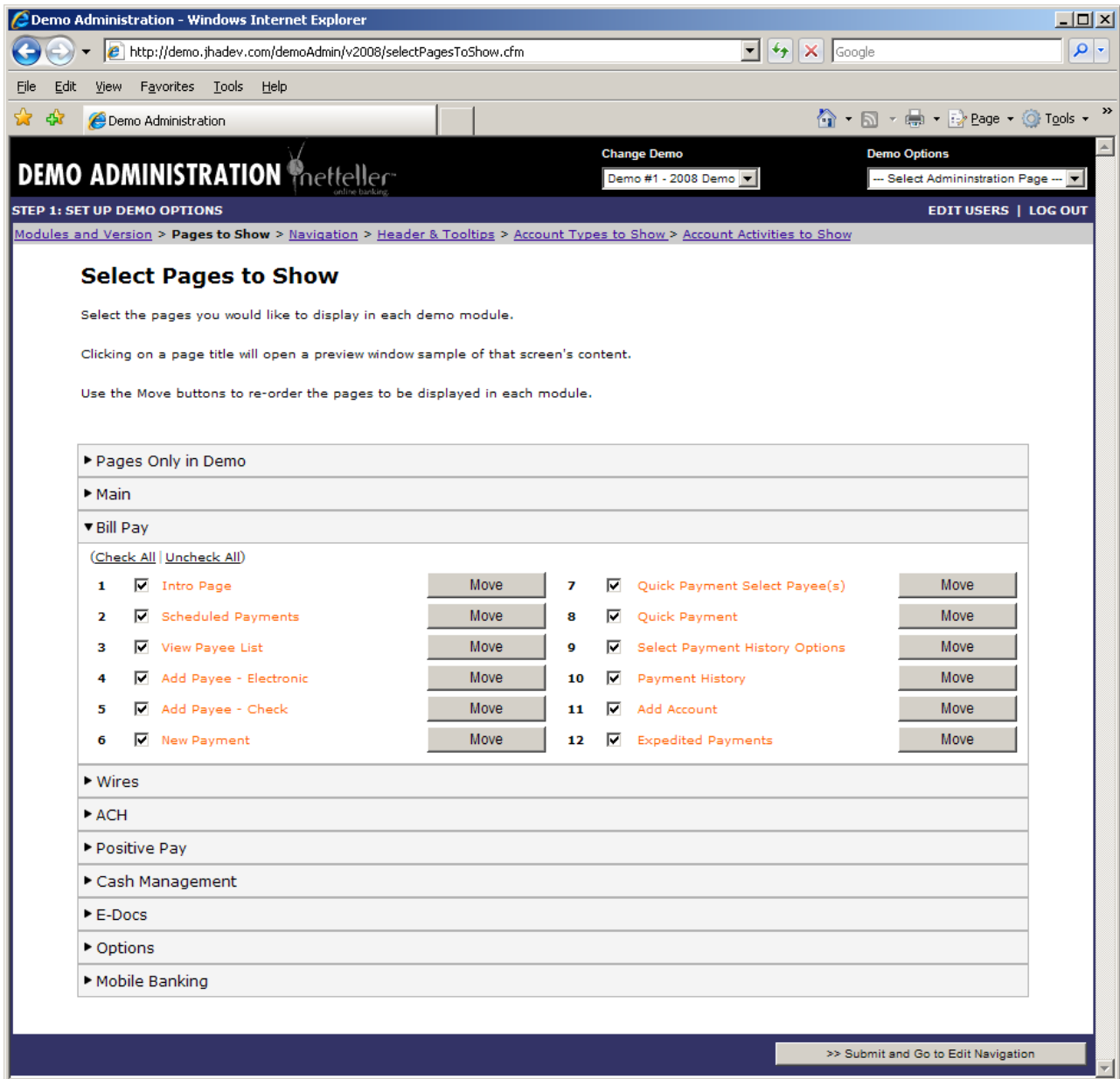
“Select Pages to Show” Administration Modifications

Benefit

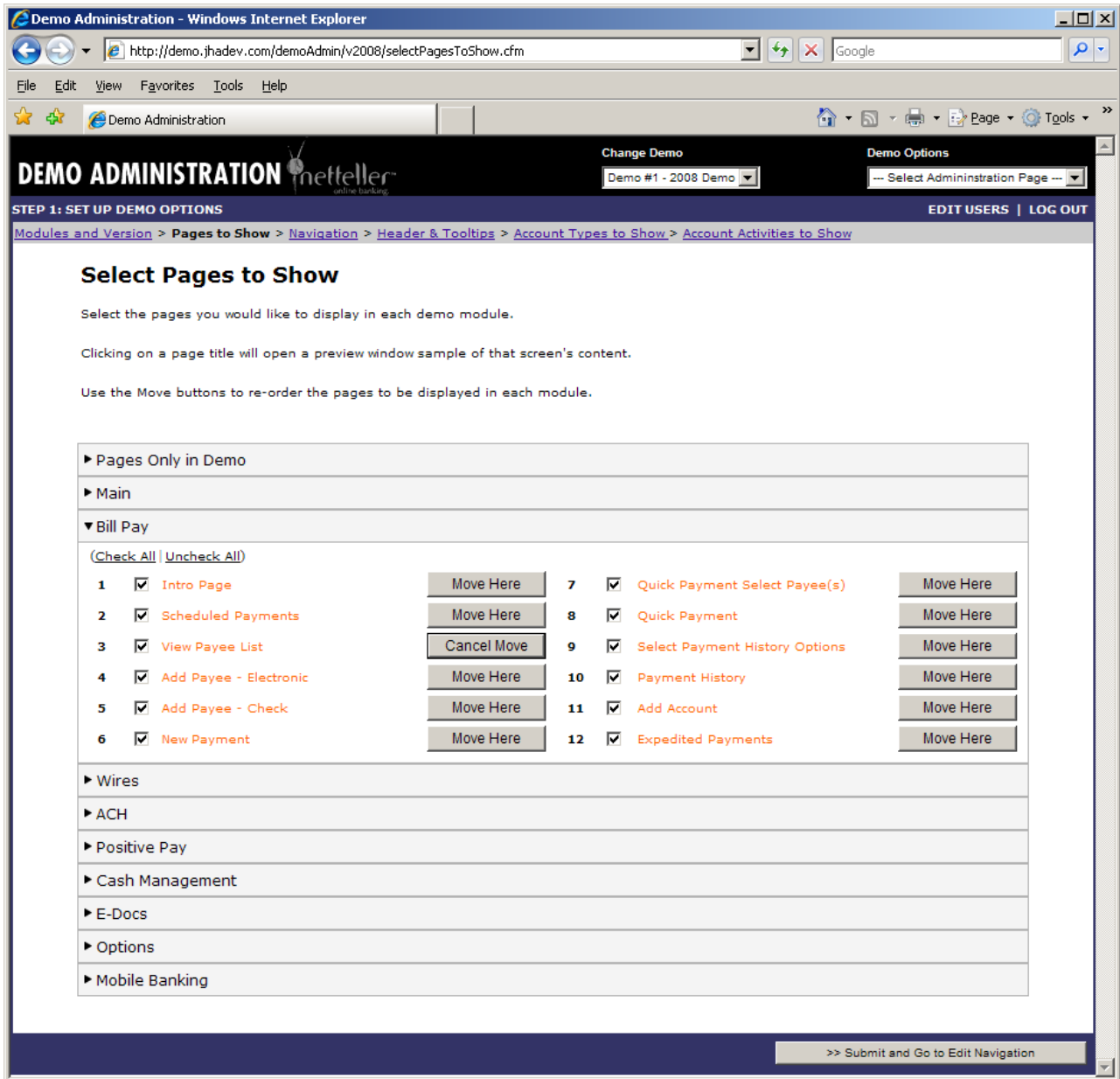
This usability enhancement will make the selection of pages and their reorder more intuitive.

Instructions for Implementation

1. Select the module’s title to view the pages inline that are available to show under that module.
2. Select the pages you wish to display in that module. Pages can be selected individually or you can select “Check All” to select all pages available to show in that module.



3. Move the pages by clicking the "Move" button to the right of the page you wish to move.
4. Click the "Move Here" button to move the page to the desired position or select "Cancel Move" to cancel the action.
5. Click the ">> Submit and Go to Edit Navigation" to submit the changes.



NETTELLER DEMO v2009 ENHANCEMENT DETAIL

“Logo & File Upload” Administration Modifications

Benefit

This administration page has been modified to allow the financial institution to upload and update their Mobile Banking logo and a sample E-Statement. The sample E-Statement must be uploaded as an image file. The administration page details the allowed file types and file size restriction.

Important Note:

- The Main and Mobile Banking logos must be image files and are restricted to the file formats found in the “Notes:” section of the “Logo & File Upload” administration page.
- The E-Statement Sample file must be a PDF file when uploaded. The PDF file will be automatically converted to an image file for display purposes.

Instructions for Implementation

1. Select the appropriate “Browse” button to search for the image or PDF file on a local drive or server.

The screenshot shows a web browser window titled "Demo Administration - Windows Internet Explorer" with the URL "http://demo.jhadev.com/demoAdmin/fileUpload.cfm". The page header includes "DEMO ADMINISTRATION" with the Neteller logo, "Change Demo" (set to "Demo #1 - 2008 Demo"), and "Demo Options" (set to "Select Administration Page"). There are links for "EDIT USERS" and "LOG OUT".

The main content area is titled "Logo & File Upload" and contains a "Notes:" section with the following bullet points:

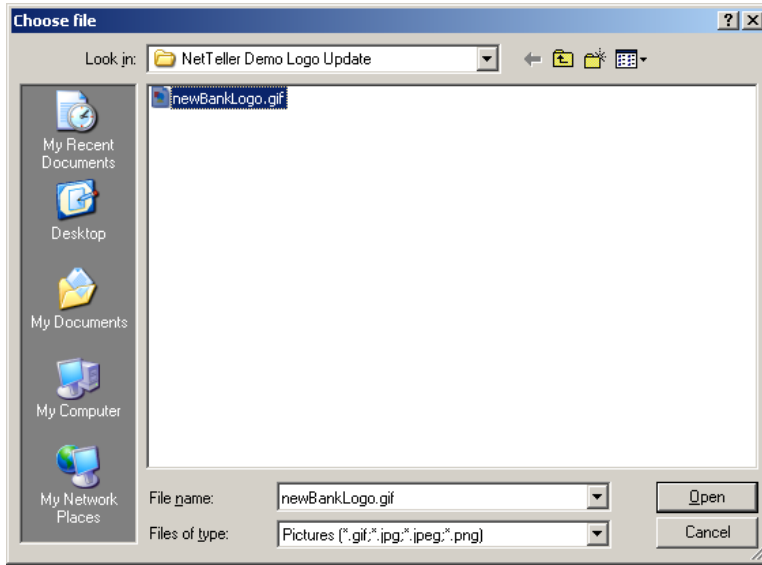
- This administration lets you upload a new graphic file to replace your existing main logo and mobile banking logo.
- This logo is used for all of your demos. You can not upload more than one image for each type of logo.
- The following image formats are allowed:
 - JPEG/JPG
 - GIF
 - PNG
 - BMP
- Logos must be smaller than 1024KB in size.
- This administration lets you upload a new PDF file to be used for the E-Statement Sample. The PDF will be changed to an image for display purposes.

Below the notes are three sections for file uploads:

- Main Logo:** "New Main Logo:" followed by a text input field and a "Browse..." button (highlighted with a red box).
- Mobile Banking Logo:** "New Mobile Logo:" followed by a text input field and a "Browse..." button (highlighted with a red box).
- E-Statement Sample:** "New Sample Statement PDF:" followed by a text input field and a "Browse..." button (highlighted with a red box).

An "Upload" button is located at the bottom right of the form area.

2. Select the image/PDF file to upload and click "Open".



3. The path to the new logo/PDF file will display in the "New File:" field. Select the "Upload" button in the lower right of the screen to upload the logo(s) and/or PDF file to the NetTeller Demo.