



## NETTELLER DEMO v2008 ENHANCEMENT LIST & IMPLEMENTATION GUIDE

EFFECTIVE DATE: MARCH 17, 2007

### Purpose of This Document

This document is designed to detail the implementation of the version 2008 upgrade of the NetTeller Demo product for the NetTeller Demo User Group.

### General Availability Date

The 2008 version of the NetTeller Demo product and related enhancements was implemented in production during regularly scheduled system maintenance on Sunday, March 16, 2007. The 2008 version is available to all financial institutions with signed NetTeller Demo contracts and who have been installed and trained by the Internet Solution's (IS) Education department. This product's version availability is independent of your scheduled NetTeller product's release weekend.

### Version 2009 Enhancements

Version 2009 Enhancements will be submitted through JHA's ESP (Enhancement Submission Process) application. The enhancement submission/voting period will not begin until the NetTeller product suite's 2009 enhancements have been announced as many enhancements to the NetTeller Demo will largely be based upon accepted NetTeller product suite's 2009 enhancements.

### NetTeller Demo v2008 - Enhancement & Fix List

1. NetTeller 2008 New Look & Feel  
The new look and feel for NetTeller has been implemented in the NetTeller Demo product and available to show in the Demo now that the release is in the production environment.  
*Version Availability:* This enhancement is available in version 2008 of the NetTeller Demo.
2. Add Interbank Transfer Page  
Five (5) new screens have been added for the Interbank Transfer functionality. The pages added are as follows.  
*Version Availability:* This enhancement is available in versions 2007 and 2008 of the NetTeller Demo.
  - i. Pending Transfers
  - ii. Add Account
  - iii. Enrolled Accounts
  - iv. History
  - v. Set Up New
3. Remove All Real Company Names  
The names of real companies and organizations found in the sample NetTeller Demo screens have been changed to fictional or generic names.  
*Version Availability:* This enhancement is available in versions 2006, 2007 and 2008 of the NetTeller Demo.
4. v2008 New Pages  
Two (2) new screens from NetTeller version 2008 have been added to the NetTeller Demo  
*Version Availability:* This enhancement is available in versions 2007 and 2008 of the NetTeller Demo for Silverlake banks only.
  - i. CM ARP – ACH Exceptions (only in version 2008 for Silverlake banks)
  - ii. CM Wires – Transmit Templates (only in versions 2007 and 2008 for Silverlake banks)
5. Logo Management (screen shots available on pages 3-5)  
The enhancement gives the bank the ability to upload the logo they want to have displayed on the NetTeller screens within the NetTeller Demo.  
*Version Availability:* This enhancement is available in all versions of the NetTeller Demo.
6. Stop Payment Screen Updates  
The Stop Payment screens have been updated to reflect changes made to the NetTeller product since the last NetTeller Demo development cycle.  
*Version Availability:* This enhancement is available in versions 2007 and 2008 of the NetTeller Demo.

7. Environment Change – Update NetTeller Information (screen shots available on pages 6 and 7)  
The NetTeller Demo product has been relocated from the NetTeller Hosting Environment to the Web Hosting Environment. (Both reside within the IS ASP Operations Center.) The bank information (color settings, address, etc.) that dynamically displays in the NetTeller Demo can no longer be called directly from the NetTeller database. As a result, the information is imported daily from NetTeller. If you make an update to this information in the NetTeller product and can't wait for the daily import to update the NetTeller Demo, you may force an update using the new "Update NetTeller Information" page within the administration. Instructions and screen shots are available on pages 6 and 7 of this document.  
*Version Availability:* This enhancement is available in all versions of the NetTeller Demo.
8. Demo Statistics  
The statistics data older than one year will now be automatically purged on a monthly basis.  
*Version Availability:* N/A

### **Steps to Implement Version 2008**

Before you begin the implementation process, please read through the following steps. Be sure that you understand the steps thoroughly before you begin the set up process. If you are unclear how to complete the steps below please submit a support case through the Clients Only Portal or place a support call at 1-800-299-4222 and you will be assisted. Please note that you will need to be on your financial institution's Authorized CWR Approver list for the NetTeller Demo product in order to receive assistance with an existing or new administration account for the NetTeller Demo administration site.

1. Open a browser window.
2. Type the Demo administration site URL in the address line. If you do not recall the administration site address and/or your username and login, please contact IS (NetTeller) Customer Support at 1-800-299-4222.
3. After logging in, begin the 2008 set up in your Demo's administration site. You may create a new Demo site by selecting the "Multiple Demo Administration" or "Clone Demo Administration" in the Demo Options drop-down menu or you may modify an existing Demo site using the "Select Versions and Modules" page. On the "Select Versions and Modules" page, select version 2008 to show and then select the products/modules that you would like to show in your Demo site.
4. Proceed to the next page, "Pages to Show," and select the pages, including new and revised page(s), you would like to show in your Demo. You will be able to reorder the pages within each section on this administration page.
5. Proceed through the remainder of the Demo administration and make edits where applicable.

#### **Important Reminders:**

- When updating the text on a page be sure you click the word "Update" to submit your changes before you navigate to the next page.
- **You will have to select the headers you want to display in version 2008. Header selections will not carry over from your previous versions of the Demo.**

# NETTELLER DEMO v2008 ENHANCEMENT DETAIL

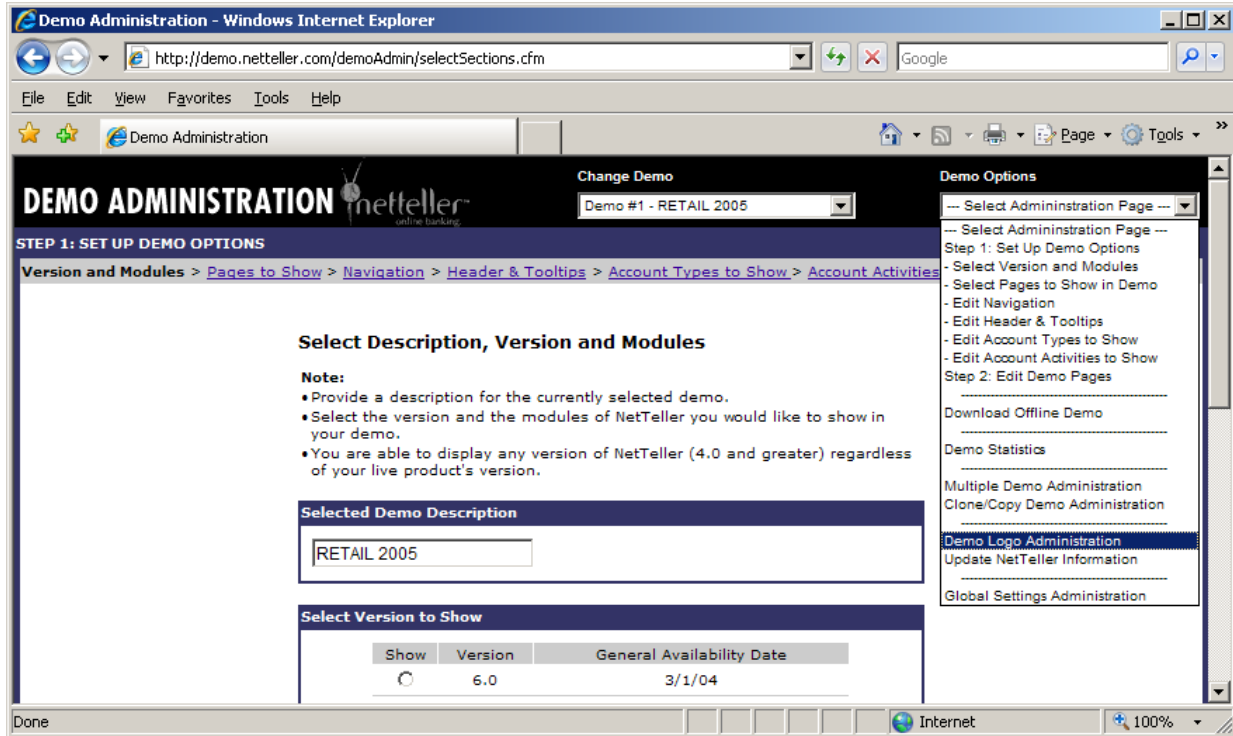
## Logo Management

### Enhancement Description

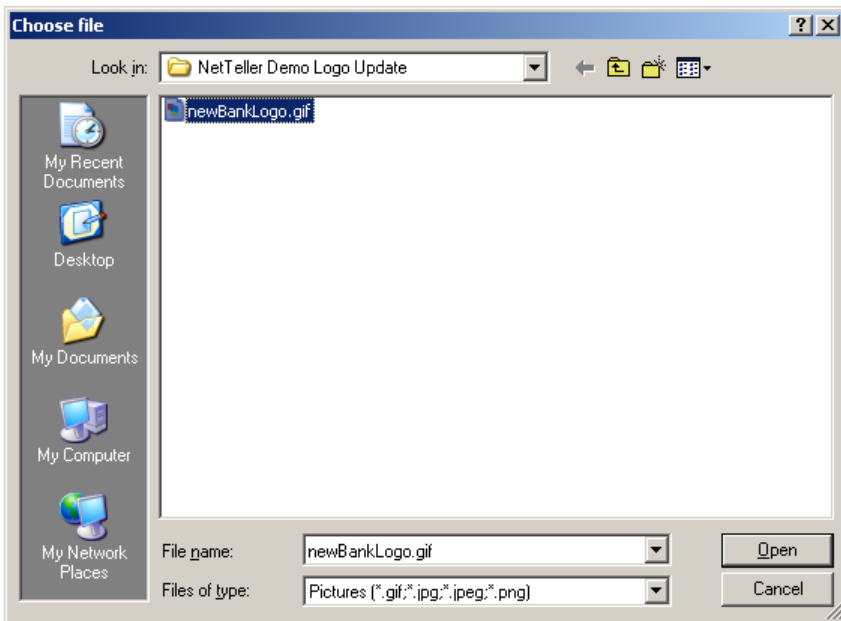
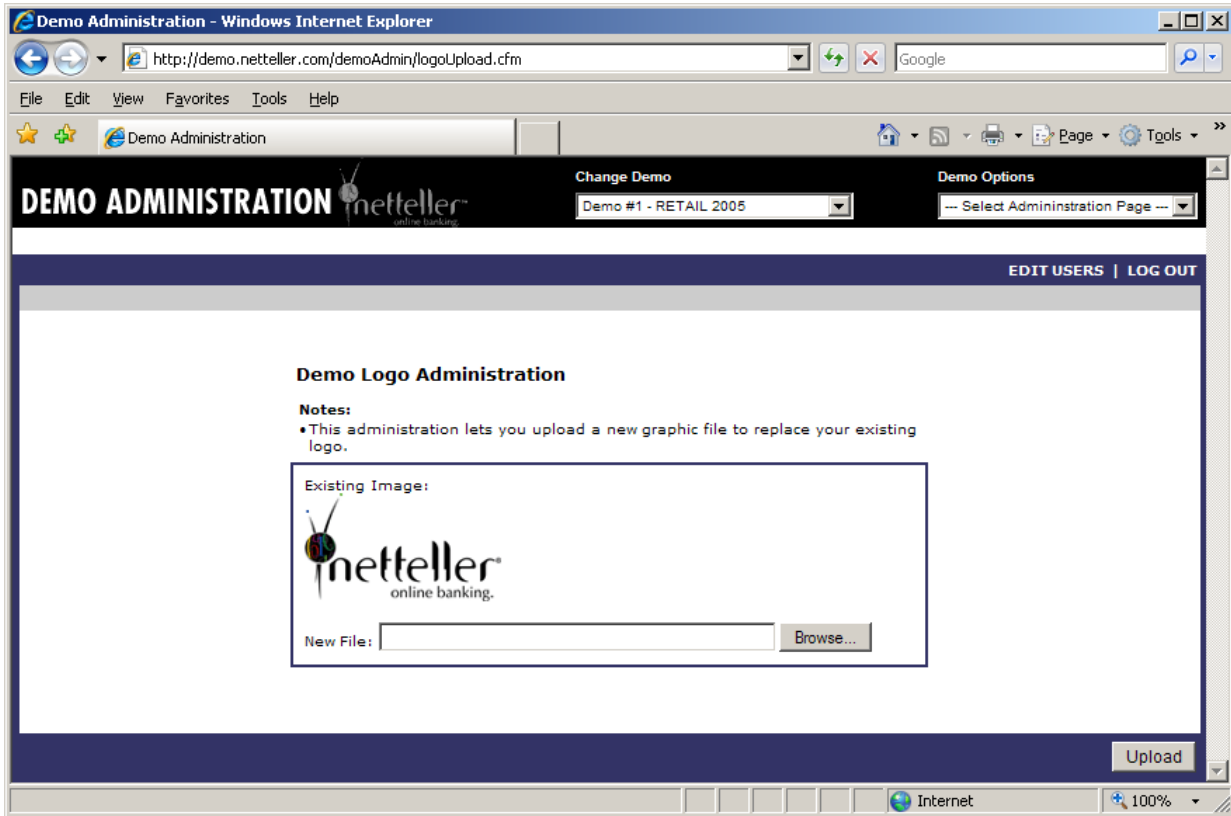
Through the NetTeller Demo administration site, your financial institution now has the ability to update the logo that displays within the NetTeller Demo product. Please note that this only changes the logo in the NetTeller Demo product. Logo updates to the NetTeller product should be submitted as a Client Work Request (CWR.)

### Instructions for Implementation

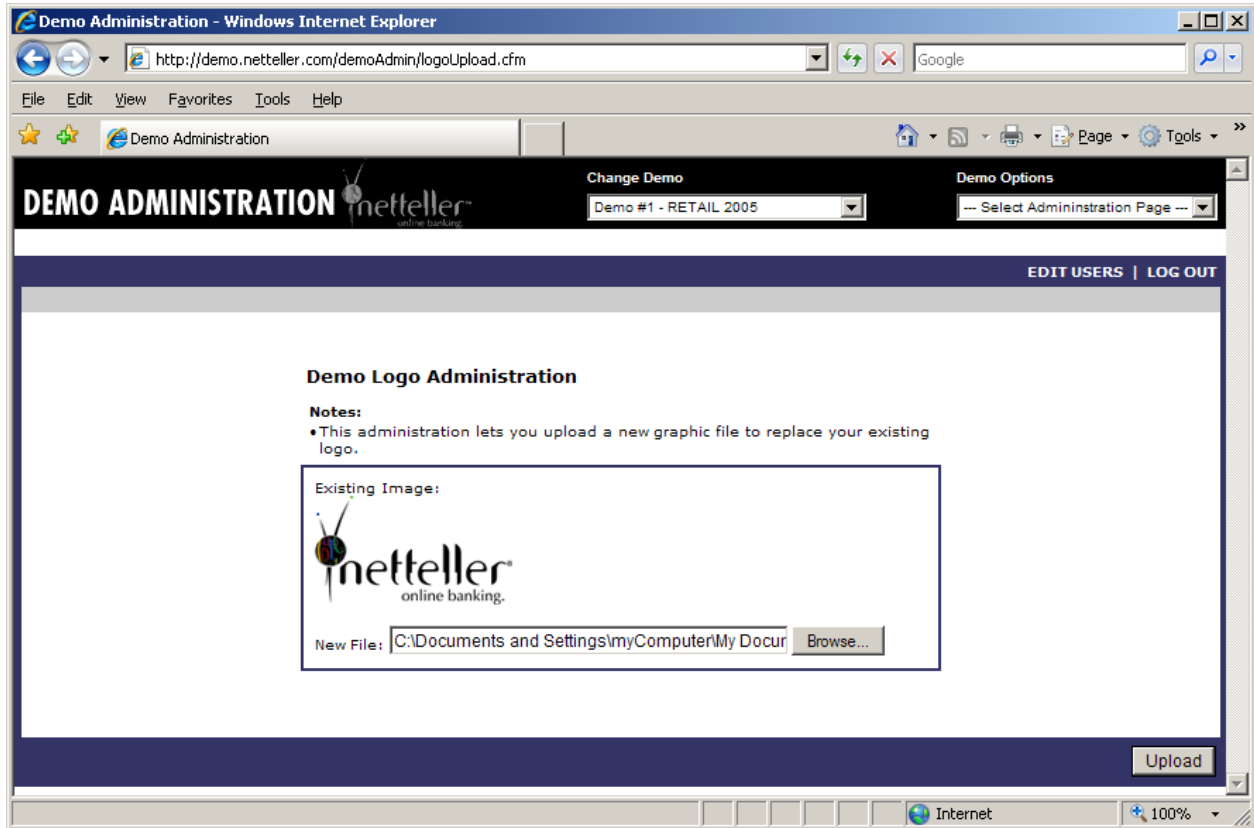
1. From any screen within the administration site, select "Demo Logo Administration" from the "Demo Options" drop-down menu.



2. Click the "Browse" button to browse your computer and select your new logo graphic.



- The path to the new logo will display in the "New File:" field. Select the "Upload" button in the lower right of the screen to upload the logo to the NetTeller Demo.



# NETTELLER DEMO v2008 ENHANCEMENT DETAIL

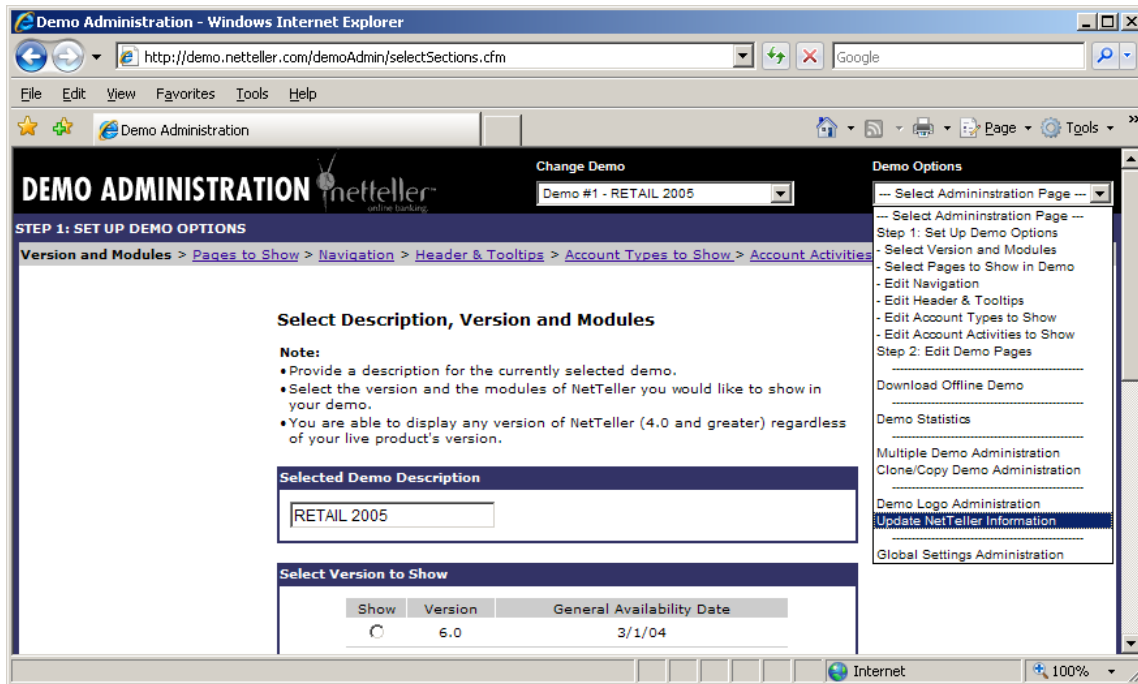
## Environment Change – Update NetTeller Information

### Enhancement Description

The NetTeller Demo product has been relocated from the NetTeller Hosting Environment to the Web Hosting Environment. (Both reside within the IS ASP Operations Center.) The bank information (color settings, address, etc.) that dynamically displays in the NetTeller Demo can no longer be called directly from the NetTeller database. As a result, the information is imported daily from NetTeller. If you make an update to this information in the NetTeller product and can't wait for the daily import to update the NetTeller Demo, you may force an update using the new "Update NetTeller Information" page within the administration.

### Instructions for Implementation

1. From any screen within the administration site, select "Update NetTeller Information" from the "Demo Options" drop-down menu.



2. Select the "Update Information" button to force the update. Please note that you may only force the update every 2 hours.

