



NETTELLER DEMO v2007 ENHANCEMENT LIST & IMPLEMENTATION GUIDE

EFFECTIVE DATE: MARCH 16, 2007

Purpose of This Document

This document is designed to detail the implementation of the version 2007 upgrade of the NetTeller Demo product for the NetTeller Demo User Group.

General Availability Date

The 2007 version of the NetTeller Demo product and related enhancements was implemented in production on Friday, March 16, 2007. The 2007 version is available to all financial institutions with signed NetTeller Demo contracts and who have been installed and trained by the ISG Education department. Availability is independent of your scheduled NetTeller release weekend.

Version 2008 Enhancements

Version 2008 Enhancements will be submitted through JHA's ESP (Enhancement Submission Process) application. The enhancement submission/voting period will not begin until the NetTeller product suite's 2008 enhancements have been announced as many enhancements to the NetTeller Demo will largely be based upon accepted NetTeller product suite's 2008 enhancements.

NetTeller Demo v2007 - Enhancement List

1. Cloning an Existing Demo Revision:
The clone tool has been upgraded to also allow Demos to be copied over each other. Screen shots of this new feature are available on page 3 and 4 of this document.
Version Availability: This enhancement is available in all versions of the NetTeller Demo.
2. Navigation Revision:
The navigation of the Demo has been modified to streamline the navigation interface when a large number of pages are selected to display in a particular module within the Demo. A screen shot of this modification is available on page 5 of this document.
Version Availability: This enhancement is available in all versions of the NetTeller Demo.
3. v2005 Page Removal:
The following pages were removed from the 2005 version of the Demo because they are not available within version 2005 of the NetTeller application as it functions in the production environment.
Version Availability: This enhancement only affects the 2005 version of the Demo.
 - i. Multifactor Premium Login Step 1
 - ii. Multifactor Premium Login Step 2
4. v2006 Page Additions:
The following pages were added to the 2006 Demo.
Version Availability: This enhancement is available in version 2005 of the NetTeller Demo.
 - i. NetTeller – Message Center – Messages
 - ii. NetTeller – Message Center – Send Message
 - iii. NetTeller – Message Center – View Message
 - iv. ACH – ACH Activity
 - v. ACH – Download Batch
5. v2006 Header Additions:
The following headers were added to the 2006 Demo.
Version Availability: This enhancement is available in version 2006 of the NetTeller Demo.
 - i. NetTeller – Main
 - ii. NetTeller – Transactions
 - iii. NetTeller – Downloads
 - iv. NetTeller – Stop Payments
 - v. NetTeller – Transfers
 - vi. NetTeller – Prior Days
 - vii. NetTeller – Statements
 - viii. ACH – Activity

6. Select Pages to Show - Administration Page Update:
This administration page has been modified to minimize the clutter on the screen if all of the products are selected to show. The arrows that were originally used to reorder pages have been replaced with buttons to facilitate faster reordering. Screen shots of this modification are available on page 6 of this document.
Version Availability: This enhancement is available in all versions of the NetTeller Demo.
7. Versions 4, 5 and 5.5 of the Demo Not Available for Selection:
Versions 4, 5 and 5.5 can no longer be selected to show and are not supported going forward in the NetTeller Demo product. Existing Demo sites using these versions will continue to function without issues however you will no longer be able to select these versions in new Demo instances.
Version Availability: This enhancement is available in all versions of the NetTeller Demo.

Steps to Implement Version 2007

Before you begin the implementation process please read through the following steps. Be sure that you understand the steps thoroughly before you begin the set up process. If you are unclear how to complete the steps below please place a support call for NetTeller at 1-800-299-4222 and you will be assisted.

1. Open a browser window.
2. Type the Demo administration site URL in the address line. If you do not recall the administration site address and/or your username and login, please contact ISG (NetTeller) Customer Support at 1-800-299-4222.
3. After logging in, begin the 2007 set up in your Demo's administration site. You may create a new Demo site by selecting the "Multiple Demo Administration" or "Clone Demo Administration" in the Demo Options drop-down menu (see screen shot right) or you may modify an existing Demo site using the "Select Versions and Modules" page. On the "Select Versions and Modules" page, select version 2007 to show and then select the products/modules that you would like to show in your Demo site.
4. Proceed to the next page, "Pages to Show," and select the pages, including new and revised page(s), you would like to show in your Demo. You will be able to reorder the pages within each section on this administration page.
5. Proceed through the remainder of the Demo administration and make edits where applicable.

Important Reminder:

When updating the text on a page be sure you click the word "Update" to submit your changes before you navigate to the next page.

NETTELLER DEMO v2007 ENHANCEMENT DETAIL

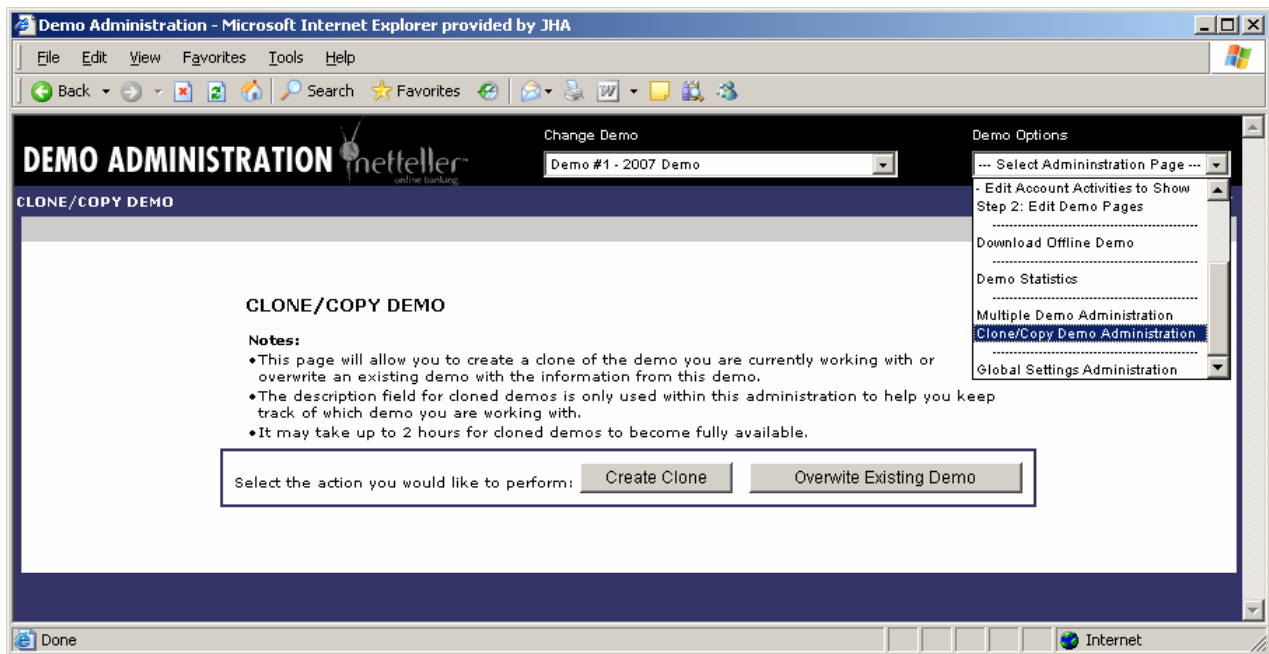
Cloning (Overwriting) an Existing Demo

Benefit

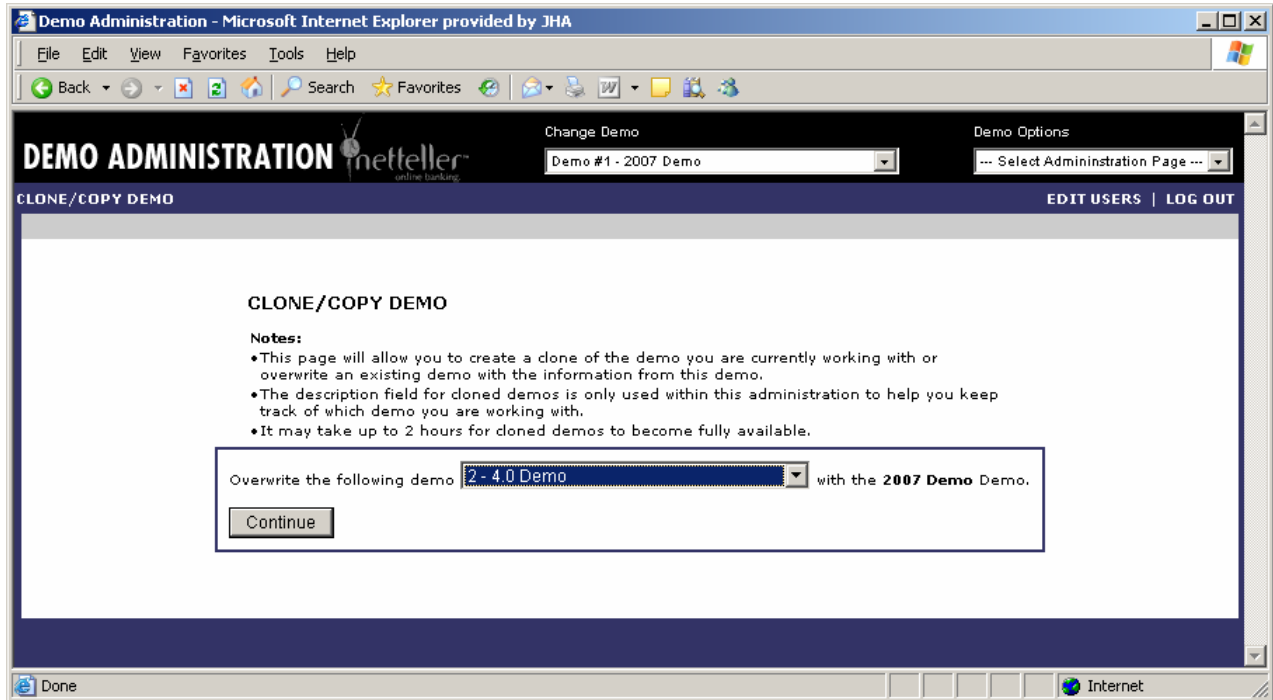
This feature allows you to fully prepare a new or updated instance of the NetTeller Demo and replace an existing Demo instance that is available to the end user from your website or NetTeller site. All modifications/updates can occur behind the scenes and published as a finished instance.

Instructions for Implementation

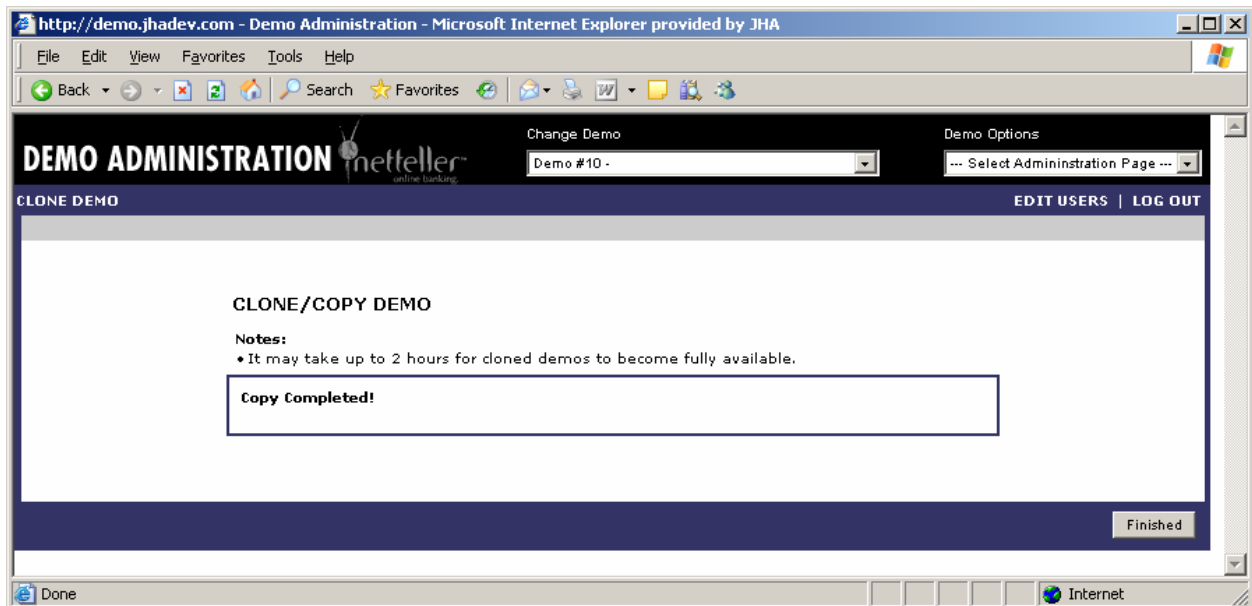
1. In the Demo Administration site, select the Demo instance that you wish to use as your source Demo site.
2. Select the "Clone/Copy Demo Administration" from the Demo Options drop-down menu.
3. Select the "Overwrite Existing Demo" button.



4. Select the Demo instance that you wish to overwrite and select the "Continue" button.



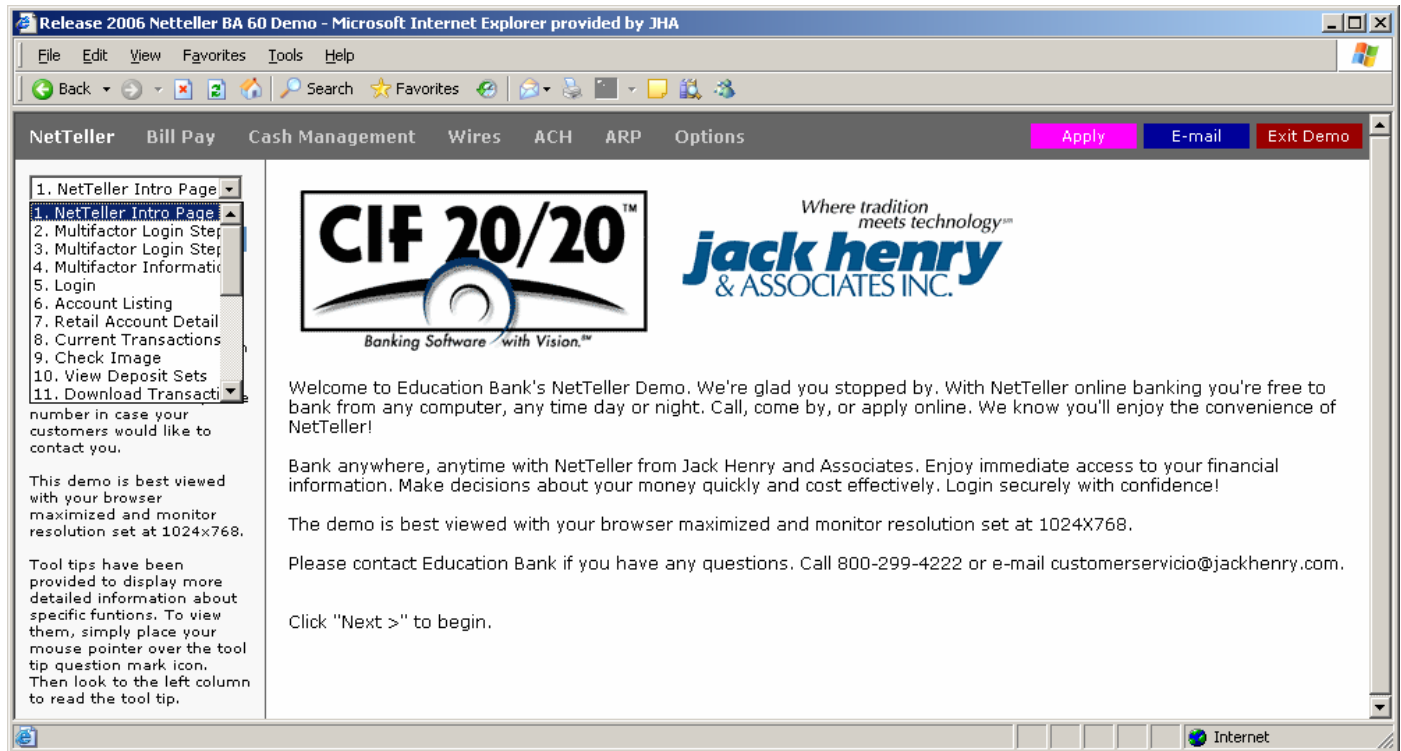
5. You will then receive a verification screen. Please note that the modifications may take up to two hours before it is visible.



NETTELLER DEMO v2007 ENHANCEMENT DETAIL

Navigation Revision

Note that the navigation specific to the product selected now appears in a drop-down menu in the left column. The example below displays the drop-down menu for the pages selected to appear in the NetTeller section of the Demo.



NETTELLER DEMO v2007 ENHANCEMENT DETAIL

Select Pages to Show – Administration Page Update

Modifications were made to this administration to make the reorder of pages easier to manage. Note that each section is updated by selecting it from the drop-down menu. Pages are then reordered by selecting the move button for the page to be moved and selecting the button for the new location of the page within the ordering sequence.

